

A R PEACHMENT

TOTAL MARINE SOLUTIONS



GEARBOXES - ZF45A



8° Down Angle, direct mount marine transmission

Maximum Input (Must not be exceeded)			
Duty	kW	HP	RPM
Pleasure	259	347	5500
Light	247	331	5500
Medium	210	281	5500
Continuous	99	113	5500

Description

- Reverse reduction marine transmission with mechanically actuated multi-disc clutches.
- Suitable for high performance applications in luxury sailboats, motor yachts, fishing boats, etc.
- Robust design also withstands continuous duty in workboat applications.
- Fully works tested, reliable and simple to install.
- Design, manufacture and quality control standards comply with ISO 9001.
- Compatible with all types of engines and propulsion systems, including waterjets and surface-piercing propellers, as applicable.

Features

- Lightweight and robust aluminium alloy casing (sea water resistant).
- Case hardened and precisely ground gear teeth for long life and smooth running.
- Output shaft thrust bearing designed to take maximum propeller thrust astern and ahead.
- Smooth and reliable hydraulic shifting with control lever for attachment of push-pull cable.
- Suitable for twin engine installations (same ratio and torque capacity in ahead or astern mode) .
- Replaceable oil filter cartridge
- Compact, space saving design due to 8° down-angle and beveloid gear principle.
- " SUPERSHIFT " clutch control.

Options

- Engine-matched torsional coupling.
- SAE 3, SAE 4 and SAE 5 B.W. adapters
- Oil cooler complete with fittings and flexible oil hoses
- Propeller shaft flange
- Control cable bracket for mounting of push-pull cable to the control lever.
- Classification by all major Classification Societies.
- SAE <A> Power Take Off.
- Thermostat valve for better performance of trolling valve in cold sea water.
- Trolling valve (mechanical) for slow-speed drive / Electric Trolling, Supershift (with Autotroll and Easidock) .



A R Peachment Ltd
Riverside Estate
Brundall
Norwich
NR13 5PL



info@peachment.co.uk



www.peachment.co.uk



+44 (0) 1603 714077



+44 (0) 1603 712211



A R PEACHMENT

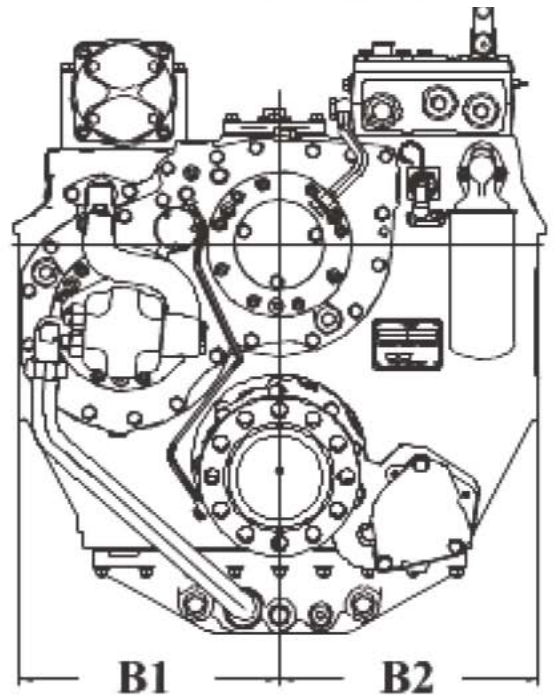
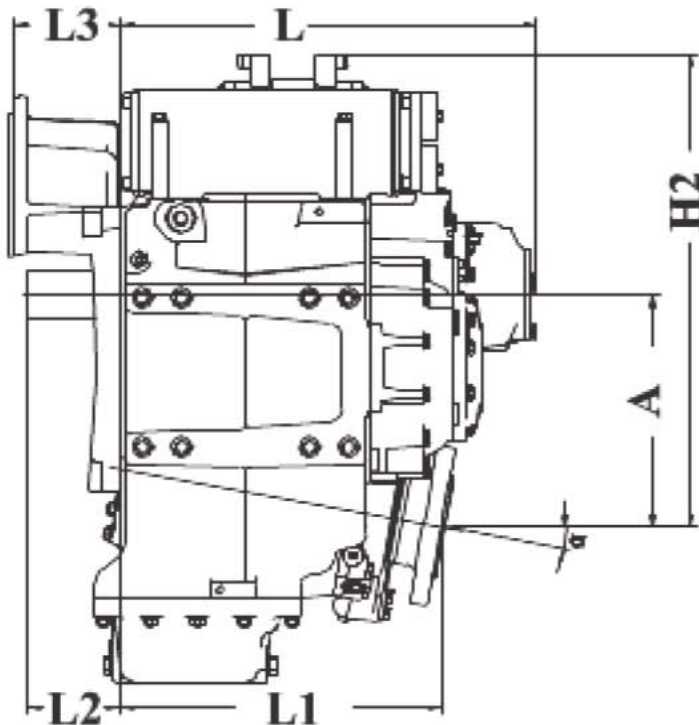


TOTAL MARINE SOLUTIONS



GEARBOXES - ZF63A

Dimensions



mm (inches)

Angle	A	B ¹	B ²	H ¹	H ²	L	L ¹	L ²	L ³	Bell Hsg.
8.0	126 (4.54)	158 (6.20)	158 (6.20)	78.5 (3.09)	270 (10.6)	305 (12.0)	228 (8.96)	65.0 (2.56)	11.0 (0.43)	B/W
Weight kg (lb)					Oil Capacity Litre (US qt)					
28.0 (62.0)					2.50 (2.65)					



A R Peachment Ltd
Riverside Estate
Brundall
Norwich
NR13 5PL



info@peachment.co.uk



www.peachment.co.uk



+44 (0) 1603 714077



+44 (0) 1603 712211



manni
energy in blue

A R PEACHMENT



TOTAL MARINE SOLUTIONS

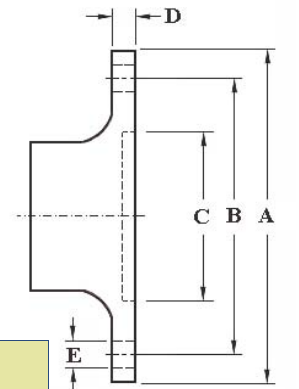
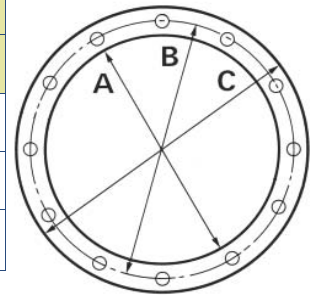


GEARBOXES - ZF63A



SAE Bell Housing Dimensions

SAE No.	A		B		C		Bolt Holes		
							No	Diameter	
	mm	in	mm	in	mm	in	mm	in	
3	409.58	16.125	428.63	16.875	450.85	17.75	12	10.32	13.32
4	361.95	14.25	381.0	15.0	403.23	15.875	12	10.32	13/32
5	314.33	12.375	333.38	13.125	355.6	14.0	8	10.32	13/32



Output Coupling Dimensions

A		B		C		D		Bolt Holes		
								No	Diameter (E)	
mm	in	mm	in	mm	in	mm	in	mm	in	
133	5.24	108	4.25	63.5	2.50	9.50	0.37	4	11.5	0.45

Output flange dimensions for Ratio 1.25 are different



A R Peachment Ltd
Riverside Estate
Brundall
Norwich
NR13 5PL



info@peachment.co.uk



www.peachment.co.uk



+44 (0) 1603 714077



+44 (0) 1603 712211



manni
energy in blue