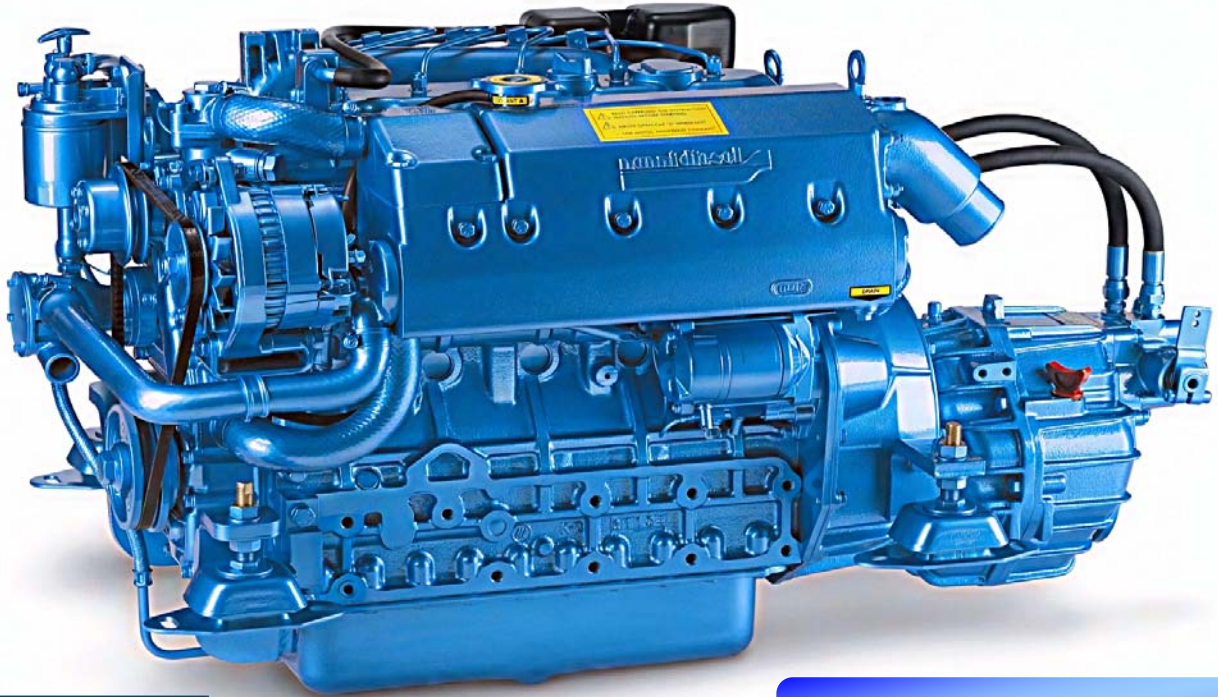


nannidiesel

energy in blue



Kubota BASE

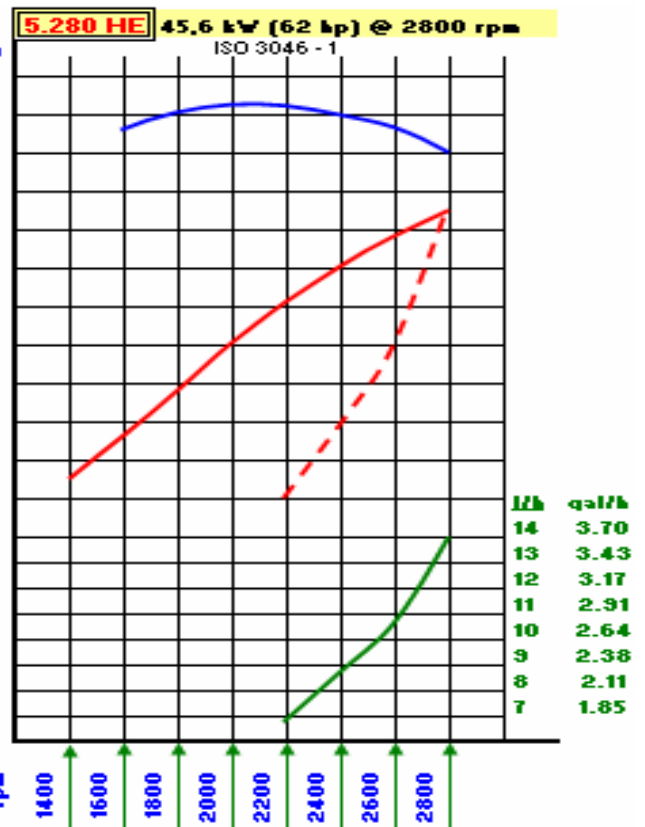
5.280 HE

45,6 kW (62 hp)

Technical Specifications

Power	45,6 kW (62 hp)
Maximum RPM	2800 RPM
Displacement	167.57ci (2746 cc)
N° of cylinders	5 in line
Bore / Stroke	3.42X3.64" (87x92,4 mm)
Compression Ratio	23 / 1
Injection	Indirect (E-TVCS)
Intake	Atmospherical
Cooling System	Heath Exchanger
Alternator	12 V 100 A
Instrument Panel	B 3
Transmission	Hydraulical
Weight (incl trans)	595.3 lb (270 kg)

Nm	kg.m
176.6	18
166.8	17
157.0	16
kW	hp
47.1	64
44.2	60
41.2	56
38.3	52
35.3	48
32.4	44
29.4	40
26.5	36
23.6	32



Hose Diameters

Exhaust	2.36" (60 mm)
Fuel	0.32" (8 mm)
Sea Water	1.12" (32 mm)
Engine Max Install. Angle	15°

NANNI DIESEL recommends

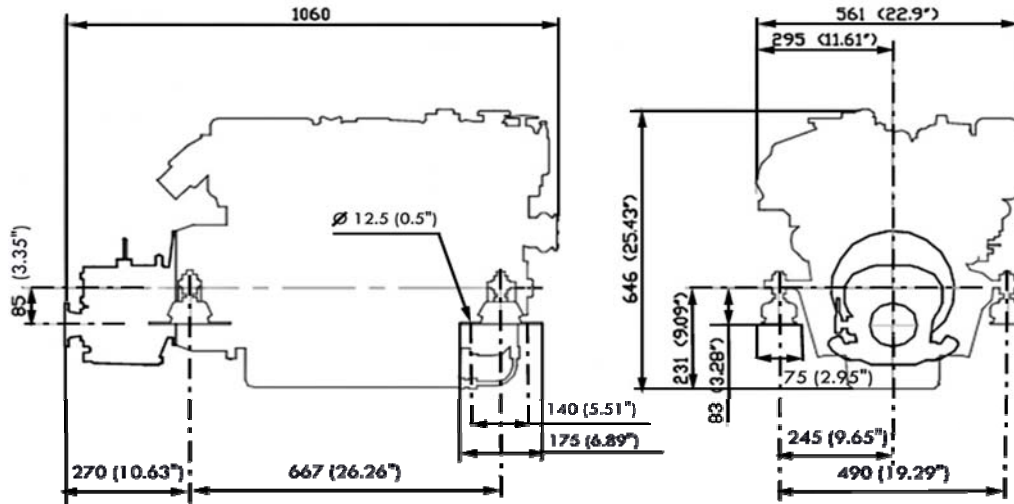


5.280 HE

Kubota BASE

Line drawings

5.280 HE / TMC260



Standard Equipment

- B 3 Instrument Panel
 - _ Tachometer / hourmeter
 - _ Oil Pressure Warning Light & Audio Alarm
 - _ Water T° Warning Light & Audio Alarm
 - _ Battery Charge
 - _ Glow Plugs
 - _ Water temperature meter
 - _ Starter Key
- Hydraulical Transmission
- Prearrangemt for cable use
- Engine Mounts
- Owners Manual
- Warranty Certificate
- Electrical Harness 13' (4m)



(220 x 145 mm)

8.66" x 5.70"

- Heath Exchanger
- Fresh Water Pump
- Thermostat
- Sea Water Pump
- Fresh Water Cooled Exhaust Manifold
- Exhaust Manifold With Water Injection
- In Line Injection Pump
- Fuel Pump
- Fuel Filter
- Oil Filter
- Extraction Oil Pump
- Electrical Wiring 12 V
- Electrical Stop

Optional

- Bipolar Electrical Wiring
- Power Take-Off
- Coupling
- Propeller shaft
- Exhaust System
- Remote Control
- Sea Water Hoses
- Fuel Hoses
- Sea Water Filter
- Angled or V transmission
- Additional alternators
- Trolling valve
- Keel coling



Riverside Estate,
Brundall, Norwich, NR13 5PL

Tel: 01603 714077

Fax: 01603 712211

e-mail: sales@peachment.co.uk