

A R PEACHMENT

TOTAL MARINE SOLUTIONS

TECHNODRIVE GEARBOXES - TM345A



Description

The Technodrive TM345A marine gearbox unit is built with aluminium alloy housing and equipped with multiple-disc clutches hydraulically operated. Clutches and gears are properly constructed to transmit the full power, with the same ratio, both in forward and reverse running. An 8° down angle on output shaft provides a proper engine-marine gearbox group installation on planing or semi-displacement type hulls.

Options

- SAE 3, SAE 4 Bell Housings
- Torsional Couplings 6.5" - 7.5"
- Cable Bracket
- Heat Exchanger Kit
- Trolling Valve
- Propeller Shaft Flange
- Electric Control Valve

Torsional Responsibility

Disregarding propulsion system Torsional compatibility could cause damage to components in the drive train resulting in loss of mobility. At minimum, system incompatibility could result in gear clatter at low speeds. The responsibility for ensuring that the torsional compatibility of the propulsion system is satisfactory rests with the assembler of the drive and driven equipment.

Technical Data

Ratios	Input Ratings - kW					
	Pleasure		Intermediate		Continuous	
	2600 RPM	3200 RPM	2100 RPM	2500 RPM	1800 RPM	2400 RPM
1.54	94	110	47	56	35	47
2.00	76	94	47	56	35	47
2.47	57	70	35	42	26	35

Maximum Engine Speed 4500 rpm
Maximum Engine Power 110kW
Dry Weight 25kg
Oil Quantity 1.6 litres

✉ A R Peachment Ltd
Riverside Estate
Brundall
Norwich
NR13 5PL

📁 info@peachment.co.uk
🌐 www.peachment.co.uk
☎ +44 (0) 1603 714077
📠 +44 (0) 1603 712211



A R PEACHMENT

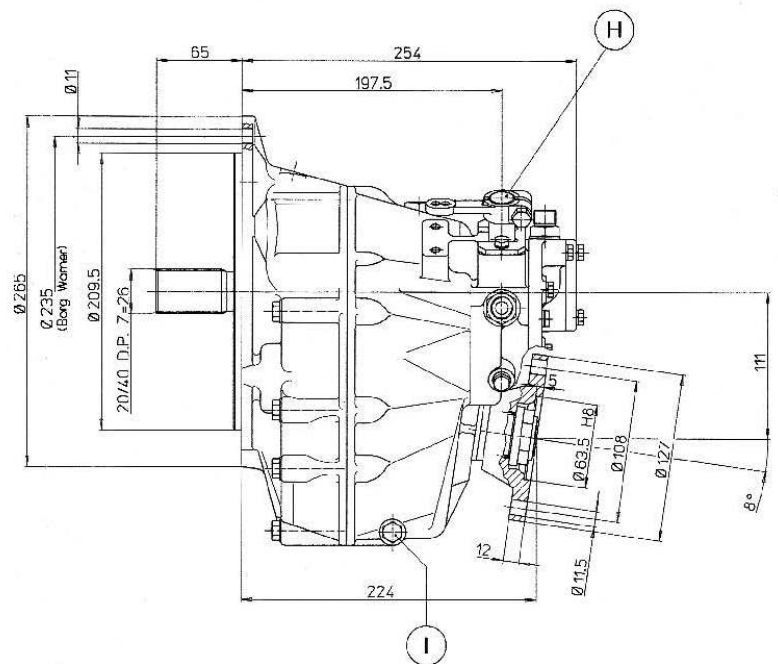
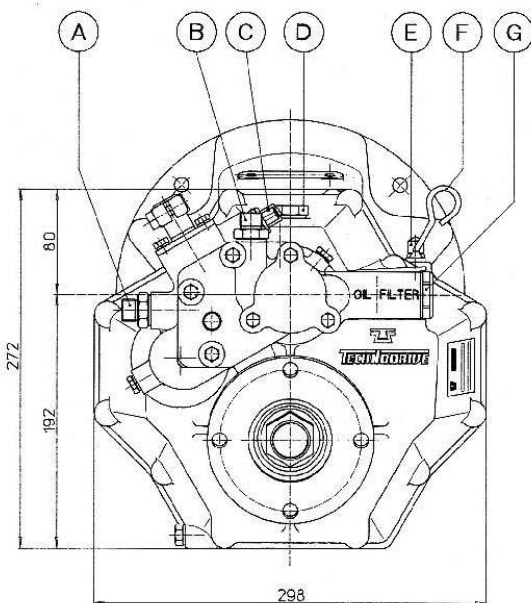
TOTAL MARINE SOLUTIONS

TECHNODRIVE GEARBOXES - TM345A



Dimension

- | | | | |
|---|-------------------|---|-----------------|
| A | Oil from cooler | F | Oil Dipstick |
| B | Oil to cooler | G | Oil Filter |
| C | Neutral indicator | H | Actuating Lever |
| D | Filling Plug | I | Oil drain Plug |
| E | Oil Breather Plug | | |



✉ A R Peachment Ltd
Riverside Estate
Brundall
Norwich
NR13 5PL

📁 info@peachment.co.uk
🌐 www.peachment.co.uk
☎ +44 (0) 1603 714077
📠 +44 (0) 1603 712211

